



CORPORATE  
REALTY GROUP INC.

903, 10050-112 Street  
EDMONTON, ALBERTA  
CANADA T5K 2J1  
PHONE: (780) 428-1799  
FAX: (780) 424-8502  
EMAIL:  
info@crpedm.com

# ***FOR SALE/ BUILD TO SUIT***

***14.01 Acres (can be subdivided)***

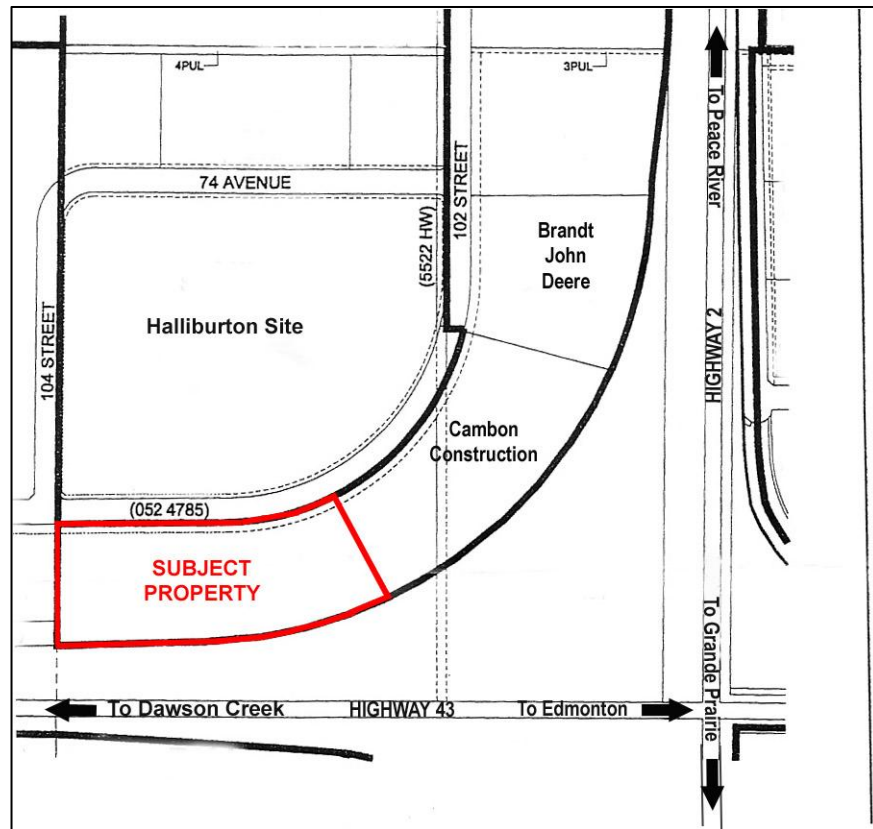


## **Location:**

- The site is located in the Westmount South Industrial Park and offers prominent and high exposure highway frontage that borders one of the fastest growing commercial and industrial areas in the region.
- Strategically located at the northern tip of Grande Prairie at the northwest corner of Highway 43 and Highway 2, known as Four Mile Corner and leads to the major highways of Northwest Alberta, Northeast British Columbia, Northwest Territories, the Yukon and Alaska.

***For Sale***

## FOUR MILE CORNER



### Features:

- Strategically located at the northern tip of Grande Prairie at the Northwest Corner of Highway 43 and Highway 2
- Highway 43 is the main transportation corridor connecting BC / Alberta and up to Alaska.

### Legal Description:

- Descriptive Plan 1121667  
Block 5  
Lot 10  
Excepting Thereout All Mines and Minerals

### Zoning:

- RM-4 Highway Industrial

### Services:

- Full municipal services to the site.

### Contact Information:

Doug Hobson  
dwh@crgedm.com

Corporate Realty Group Inc.

780-428-1799, ext. 232  
780-970-0987 (cell)